

Template for Evidence(s) UI GreenMetric Questionnaire

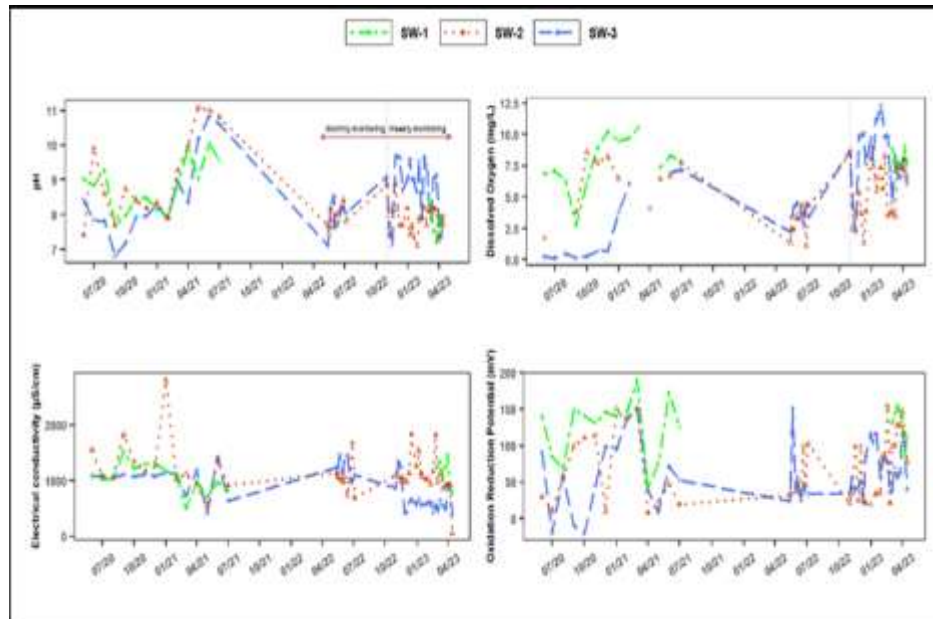
University : Gebze Technical University
 Country : Turkiye
 Web Address : www.gtu.edu.tr

[4] Water (WR)

[4.5] Water pollution control in campus area



2



	pH	Dissolved Oxygen	Conductivity	Oxidation Reduction Potential	Heat
SW-1	8.7	7.9	1072	175	19.9
SW-2	8.3	5.4	946	139	18.9
SW-3	8.6	6.9	896	93	19.1



Visual regarding the control of Saz Creek

Water pollution control in campus area at GTU (Gebze Technical University, Turkiye)

Description:

Policy

The Department of Environmental Engineering and the Institute of Earth and Marine Sciences at GTU have carried out national and international level projects aimed at protecting water resources.

- 1) Figure 1 shows sampling points for stream water (from Saz Creek running through the campus) and also groundwater wells in GTU campus.

- 2) Figure 2. The Saz Stream runs through the university campus and eventually empties into the Marmara Sea. Regular waterquality monitoring is conducted in order to prevent pollution from the campus and take measures against off-campus sources of pollution. In addition, the images include the average values of the on-site measurement parameters of the water quality monitoring stations named SW-1, SW-2, and SW-3 between June 2020 and August-March 2023. The ultimate goal is to protect the Saz Stream and ensure its sustained use, particularly for purposes such as landscape irrigation.